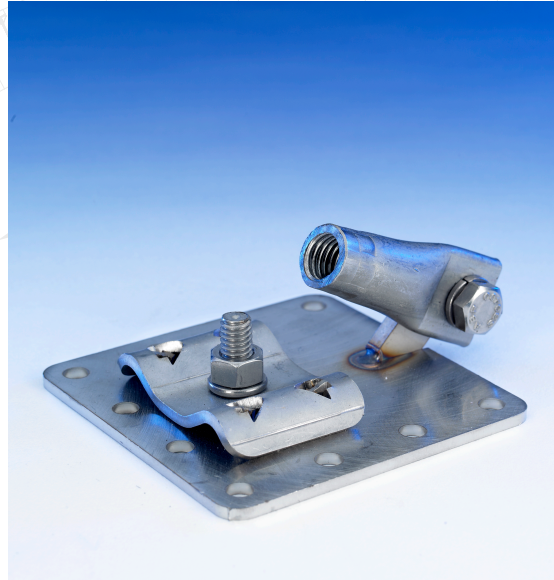




LightningMaster
Corporation

UNIVERSAL SWIVEL BASE



APPLICATION: This is the most universal base in the industry. The swivel adaptor allows the air terminal to level under most conditions. It can be secured with screws, nails, 1/4" bolts, 1/4" drive-in anchors, or an adhesive. Bolt tension cap can be turned so the cable can run horizontal or vertical. Perfect for any uneven surface. Furnished for all air terminal sizes 3/8", 1/2", or 5/8", specify when ordering.

NOTE: Available in ALUMINUM (LM-FAB-SWIVEL-A)

BRONZE (LM-FAB-SWIVEL-C)

LEADED BRONZE (LM-FAB-SWIVEL-TC)

STAINLESS STEEL (LM-FAB-SWIVEL-SS)

MODEL #LM-FAB-SWIVEL-M

M=(METAL)

This drawing is confidential and all rights are reserved. It shall not be reproduced, copied, lent or disposed of directly or indirectly, nor used for any other purpose than that for which it is specifically furnished
Model #LM-CA-48C

2100-A Palmetto St., Clearwater, FL 33765
800-749-6800

lightningmaster.com